

# Tool Changer- M94 M97 Command

**When to use:** If you have manually rotated the tool changer and/or added or removed tools, you must preset spindle & tool carousel.

**Note :** On RAN/ROB Tool Changers entire Tool Table needs to be reset.

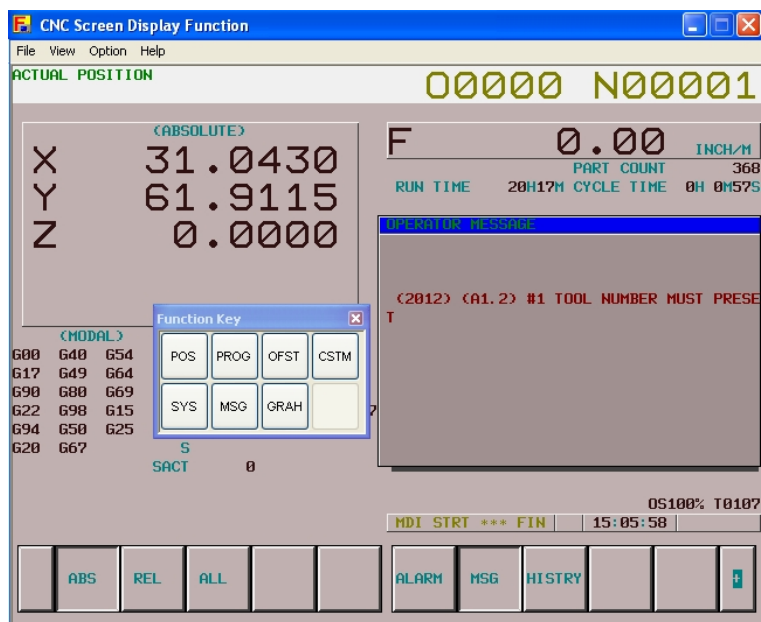


Figure 1 Error message occurs if preset has not been performed.

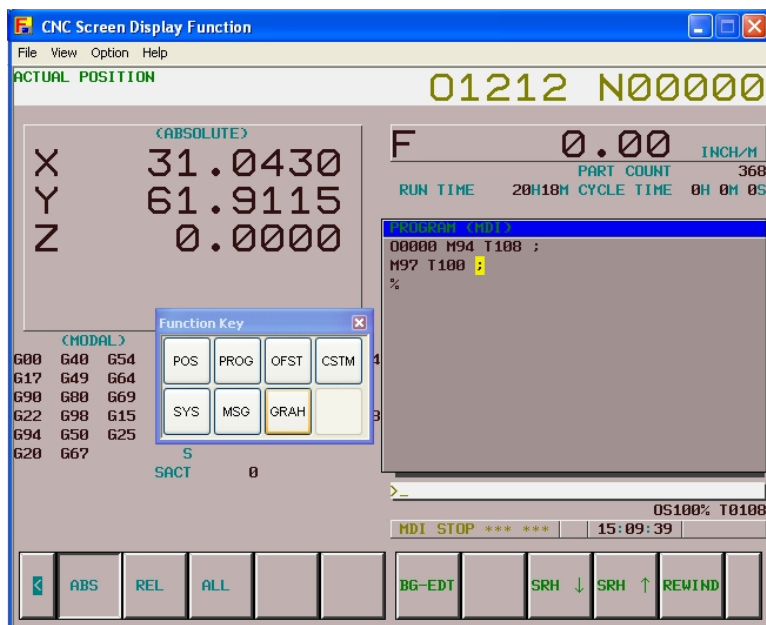
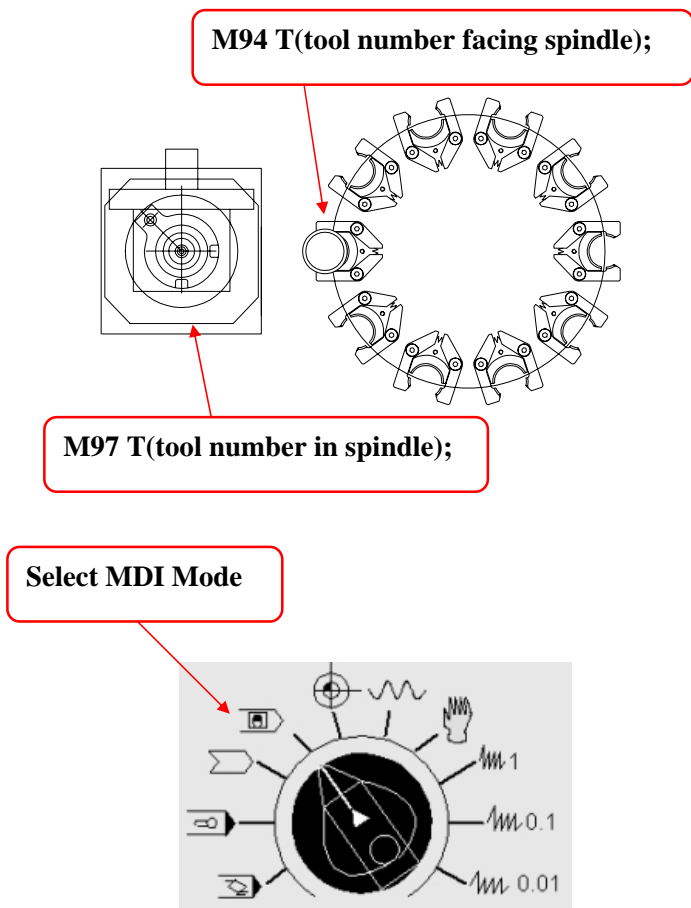


Figure 2 Do not forget to enter; End of Block, then press Cycle Start.

