

# Delete Program

**When to use:** There are two places to delete a program in the Fanuc Control.

1. **Fanuc Directory** - While viewing Fanuc program directory.
2. **Active Program** - When the active program is displayed

## Fanuc Directory

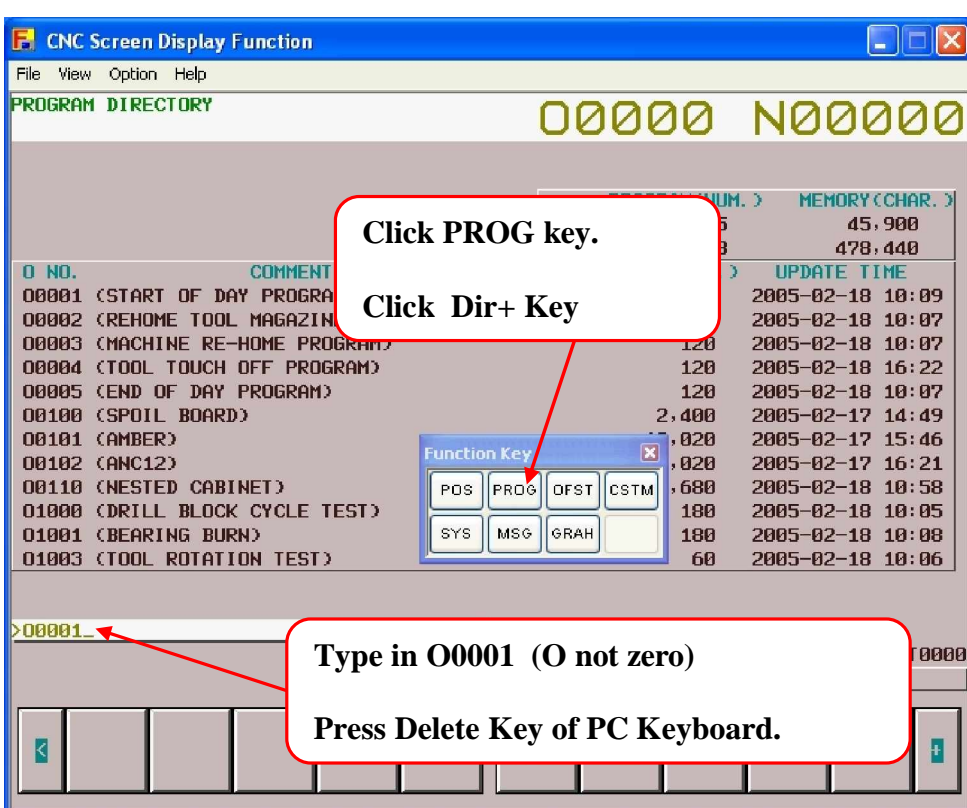


Figure 1 Directory of Programs in Fanuc Control.

**Note :** If you load a program with a existing program number.  
**073 PROGRAM NUMBER ALREADY IN USE.** To clear this error  
Just rename program number or delete program.

## Active Program

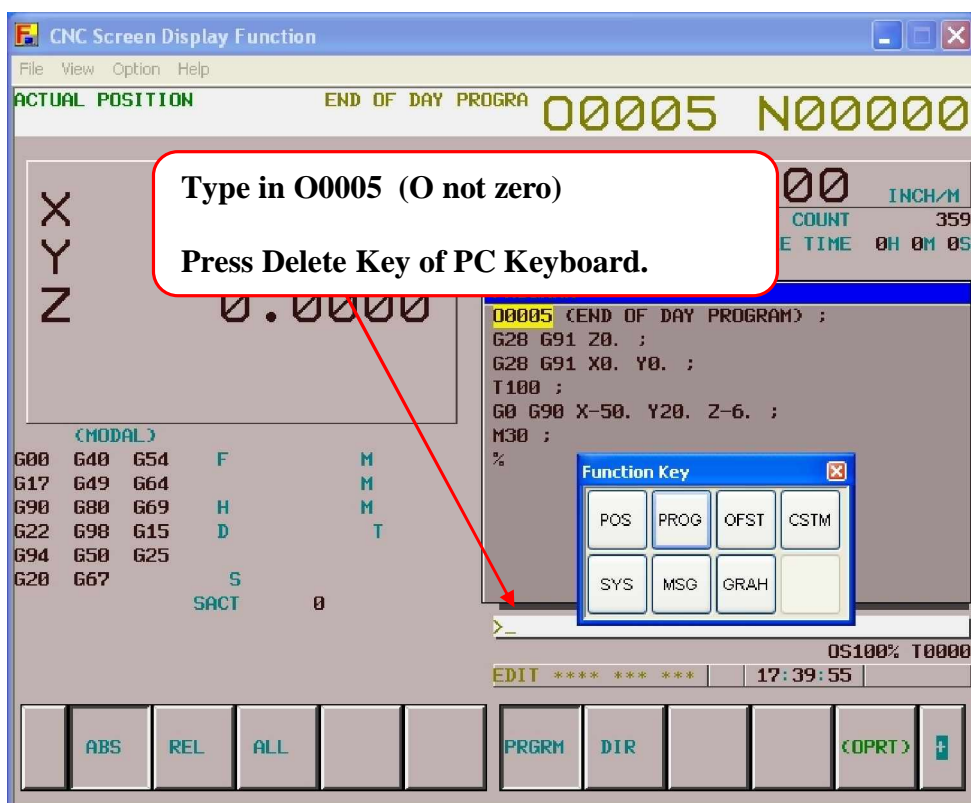


Figure 2 Active Program in Fanuc Control