

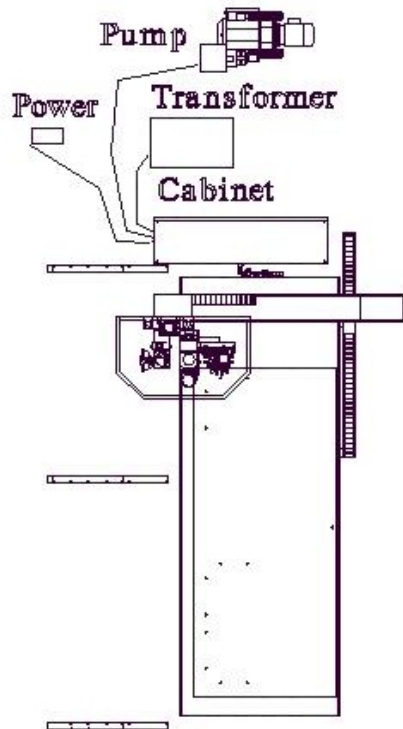
Electrical Connection Requirements for Machine Installation

- A. Single 10 HP Vacuum Pump wired into Control Cabinet
- B. Two 10 HP Vacuum Pumps wired into Control Cabinet (Models from Sept 2005)
- C. Two 10 HP Vacuum Pumps wired separate hook up for machine and vacuum pump (Retrofit -Customers who add second pumps)
- D. Single 25 HP or Larger Vacuum Pump separate hook ups for machine and vacuum pump

Machine Power	Stratos	Stratos SUP or PRO	Exxact or CabMaxx TC + D	Exxact or CabMaxx 2 TC	Exxact or CabMaxx 2 TC + D	Maxxis
208 VAC	100 AMP	100 AMP	100 AMP	200 AMP	200 AMP	100 AMP
240 VAC	70 AMP	70 AMP	70 AMP	160 AMP	160 AMP	70 AMP
480 VAC	35 AMP	35 AMP	35 AMP	80 AMP	80 AMP	35 AMP
575 VAC	30 AMP	30 AMP	30 AMP	70 AMP	70 AMP	30 AMP

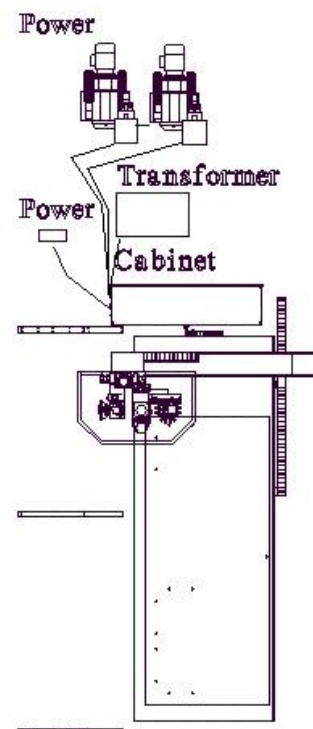
A. Single 10 HP Vacuum Pump wired into Control Cabinet

10 HP Vacuum Pumps Wired Into Control Cabinet Model requires only one power line. Customer brings power to directly to the control Cabinet.



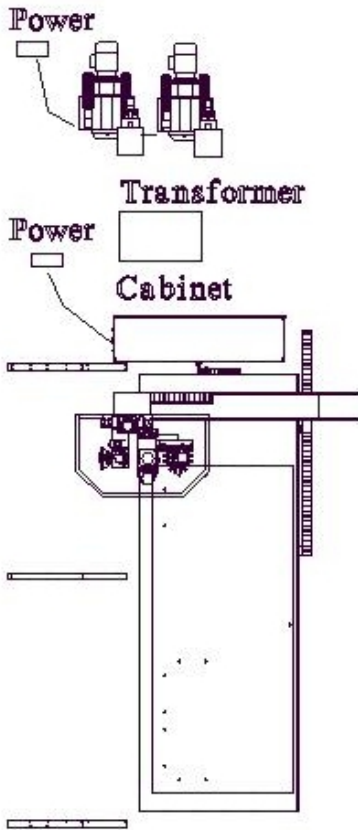
B. Two 10 HP Vacuum Pumps wired into Control Cabinet (Models from Sept 2005)

2-10 HP Vacuum Pumps Wired Into Control Cabinet Model requires only one power line. Customer brings power to directly to the control Cabinet.



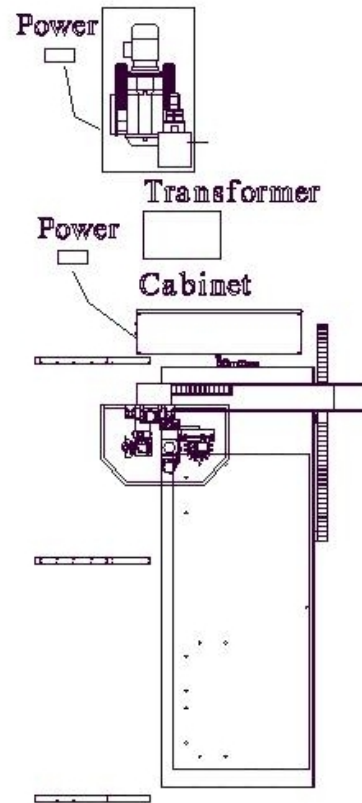
C. Two 10 HP Vacuum Pumps wired separate hook up for machine and vacuum pump

Twin 10 HP or Twin 25 HP Vacuum Pumps require 2 Separate power lines each with its own machine disconnect.
(see photo below)



D. Single 25 HP or Larger Vacuum Pump separate hook ups for machine and vacuum pump.

Single 25, 40, 60 HP Vacuum Pumps require 2 Separate power lines each with its own machine disconnect.
(see photo below)



Power for Vacuum (Vacuum requires separate power line)

Vacuum Pump Power (Pump requires separate power line)

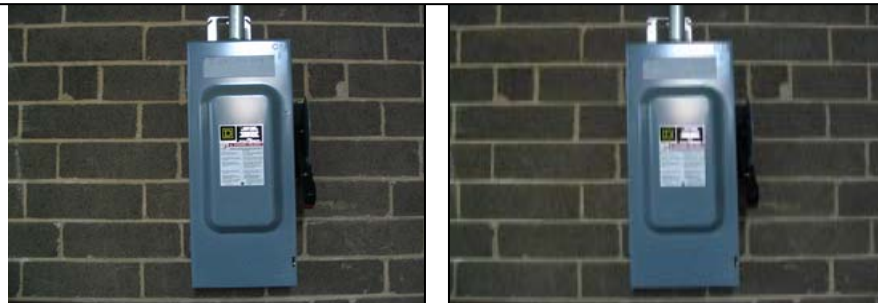
Pumps come in Standard. 220 Volts (will handle 208-240) or 460 Volts (will handle 460-480) Customer must Specify Voltage with Anderson

Vacuum Size	10 HP	Twin 10 HP	25 HP	40 HP	60 HP
208 VAC	*50 AMP	100 AMP	100 AMP	100 AMP	100 AMP
240 VAC	35 AMP	70 AMP	70 AMP	70 AMP	70 AMP
480 VAC	17.5 AMP	35 AMP	35 AMP	35 AMP	35 AMP
575 VAC	N/A	N/A	N/A	30 AMP	30 AMP

* Connects directly to the machine

- 1) The machine and the vacuum pumps must have power supplied individually to a “lockable” disconnect switches on wall in close proximity to devices.

Customer’s electrician is responsible.



Machine Disconnect

Vacuum Disconnect

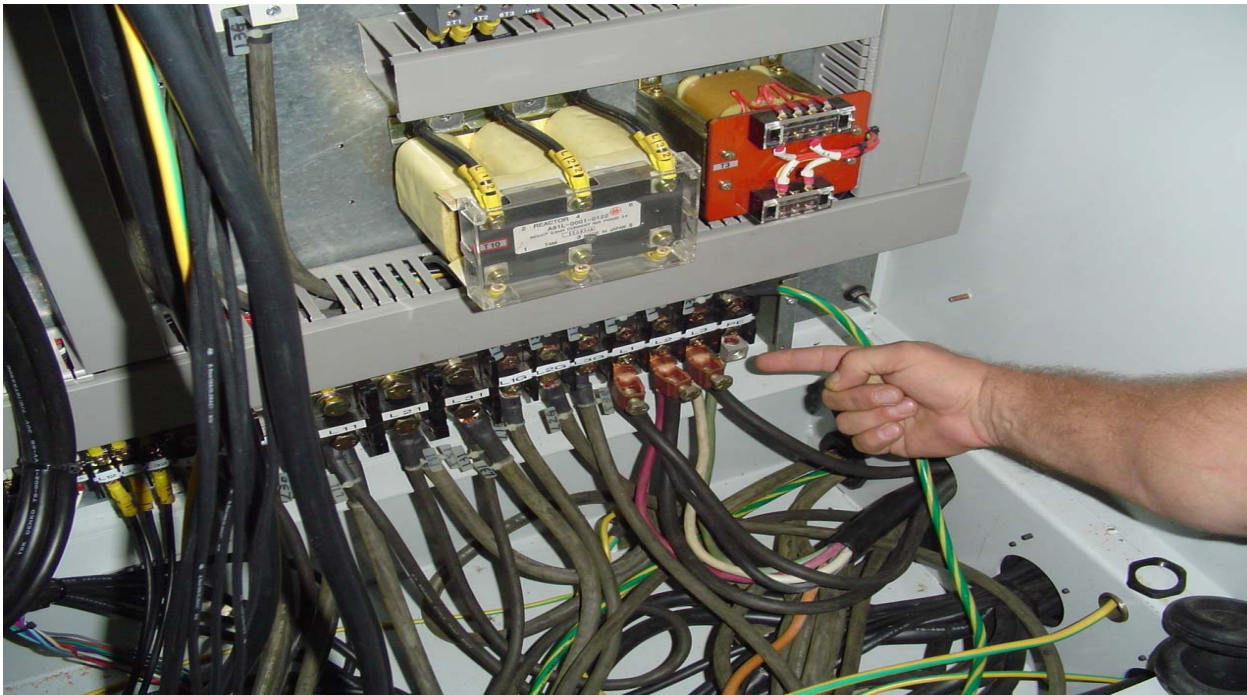


To Machine Control Cabinet
Anderson Tech takes control



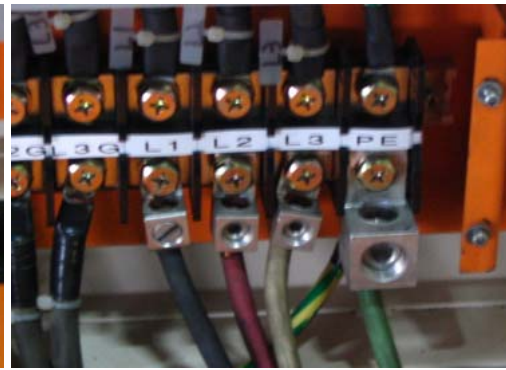
To Machine Control Cabinet
Anderson Tech takes control

- 2) The electricians will be required to pull wiring for the 3 phase incoming power L1, L2, L3 into the bottom of the main control cabinet once it has been placed based on customer requirements. The Anderson America service technicians will handle the rest of wiring for the transformer & main control cabinet.





Location – L1, L2, L3



Connection Points for L1, L2, L3

- 3) The electrician will also run L1, L2, L3 from the disconnect to a control box which is supplied by Anderson America for the “On/Off” control of the vacuum pump(s).

